



20900 SWENSON DRIVE  
BROOKFIELD, WI 53186

## FEATURES

**Private Entrances - Separate HVAC for each Suite - Private Restrooms and Kitchens Available**

**Fantastic Central Waukesha County Location Just off I-94 at Hwy 18!**

Multitude of space options with some having overhead doors and small warehouse spaces.

Owner willing to remodel to suit.

Suites 560 and 570 can be combined for a total of 7,698 SF.

Park/Complex: **Crossroads Corporate Center I**

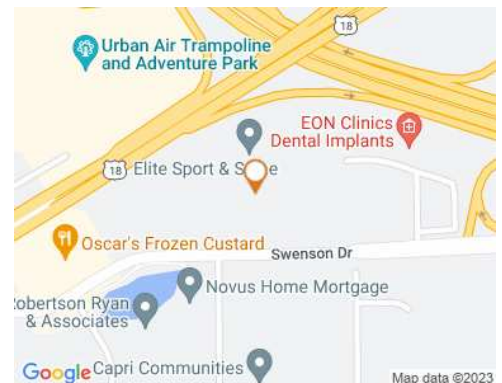
Year Built/Renovated: **1987**

Zoning: **B-3**

Parking Spaces: **Ample**

NNN Expenses: **Estimated to be \$4.50 PSF**

Listing: **4495**



## OFFICE FOR LEASE

Total SF: **83,810**

Available SF: **31,975**

Min Contiguous SF: **3,081**

Max Contiguous SF: **7,698**

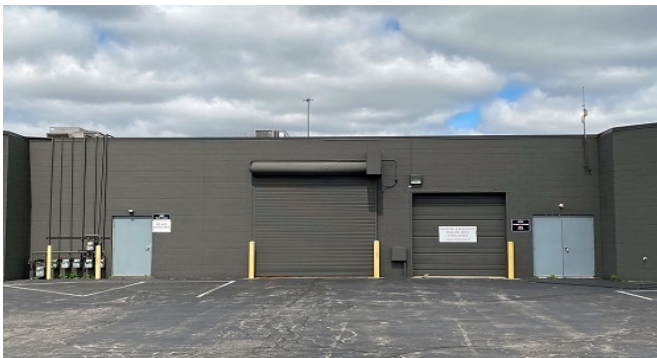
Total Acres **5.76**

NNN: **\$11.00 PSF**

Colleen Geiger, Sales Agent  
262-695-8800  
cgeiger@judsonrealestate.com

Will Schlosser, Sales Agent  
262-695-8800  
wschlosser@judsonrealestate.com

Judson & Associates, S.C.  
2831 N. Grandview Blvd, Suite 222  
Pewaukee, WI 53072



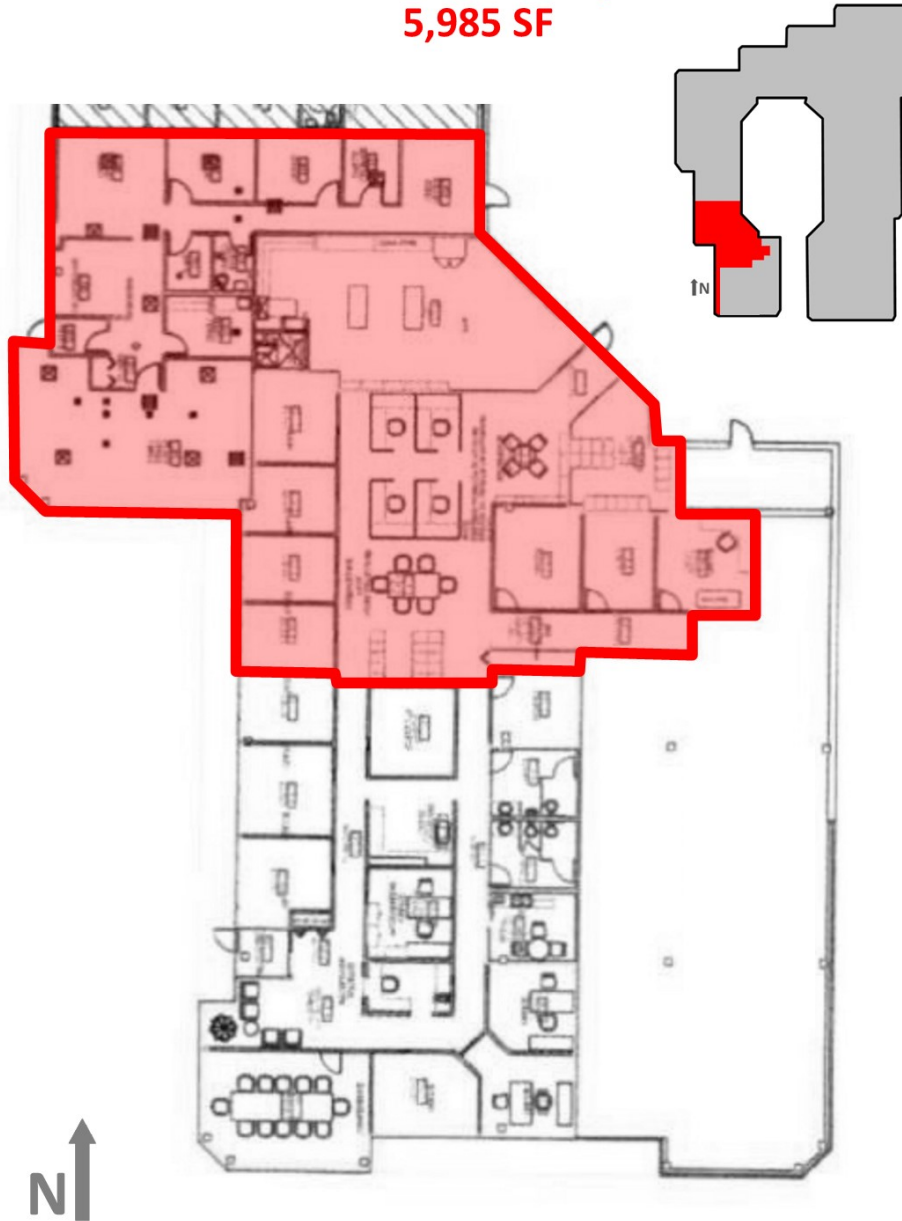
**Colleen Geiger, Sales Agent**  
262-695-8800  
cgeiger@judsonrealestate.com

**Will Schlosser, Sales Agent**  
262-695-8800  
wschlosser@judsonrealestate.com

Judson & Associates, S.C.  
2831 N. Grandview Blvd, Suite 222  
Pewaukee, WI 53072



**20900 Swenson Drive, Suite 200**  
**5,985 SF**

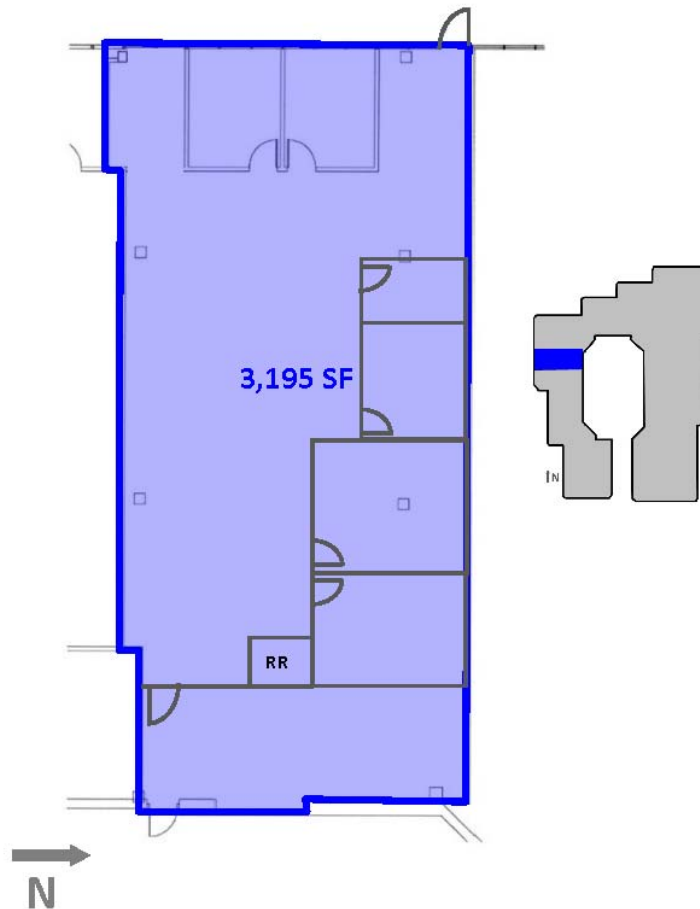


**Colleen Geiger, Sales Agent**  
262-695-8800  
cgeiger@judsonrealestate.com

**Will Schlosser, Sales Agent**  
262-695-8800  
wschlosser@judsonrealestate.com

Judson & Associates, S.C.  
2831 N. Grandview Blvd, Suite 222  
Pewaukee, WI 53072

**20900 Swenson Drive, Suite 350**



**Colleen Geiger, Sales Agent**  
262-695-8800  
cgeiger@judsonrealestate.com

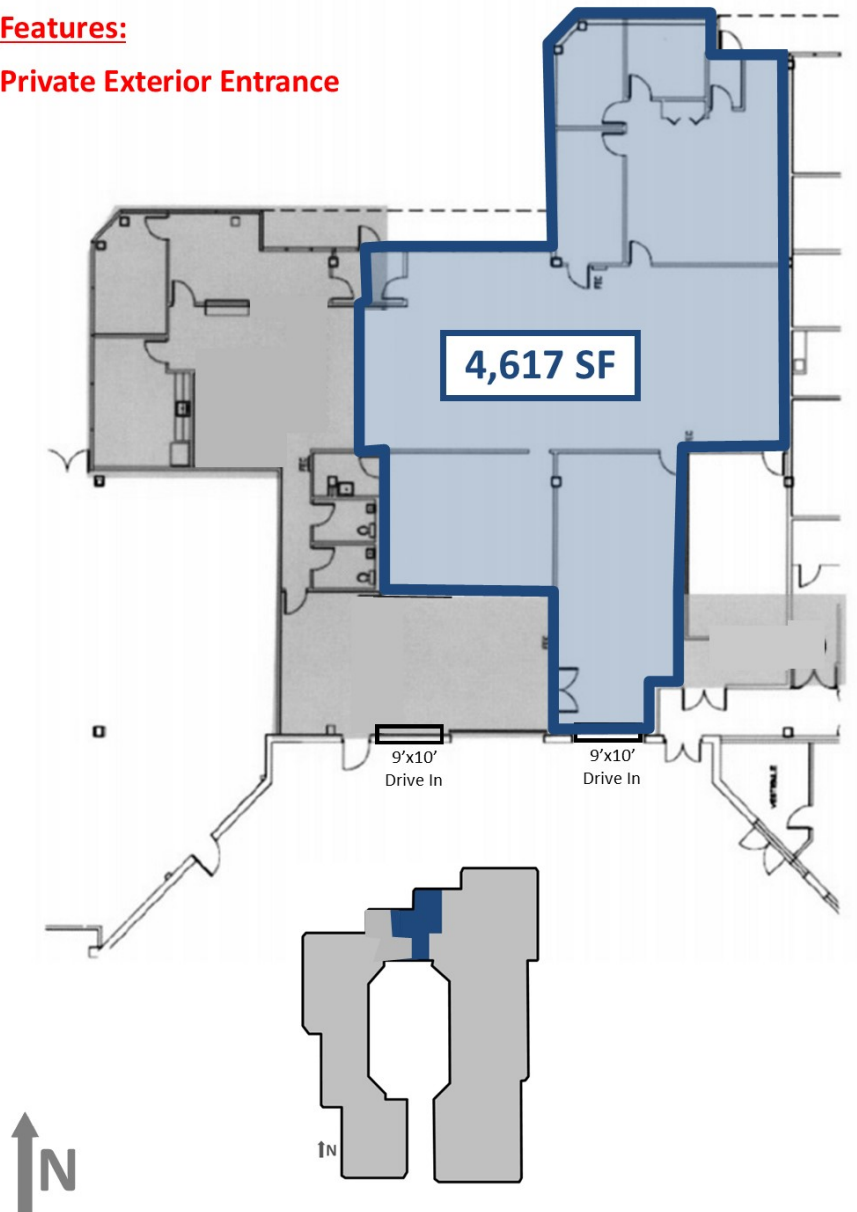
**Will Schlosser, Sales Agent**  
262-695-8800  
wschlosser@judsonrealestate.com

Judson & Associates, S.C.  
2831 N. Grandview Blvd, Suite 222  
Pewaukee, WI 53072

## 20900 Swenson Drive, Suite 560

**Features:**

**Private Exterior Entrance**

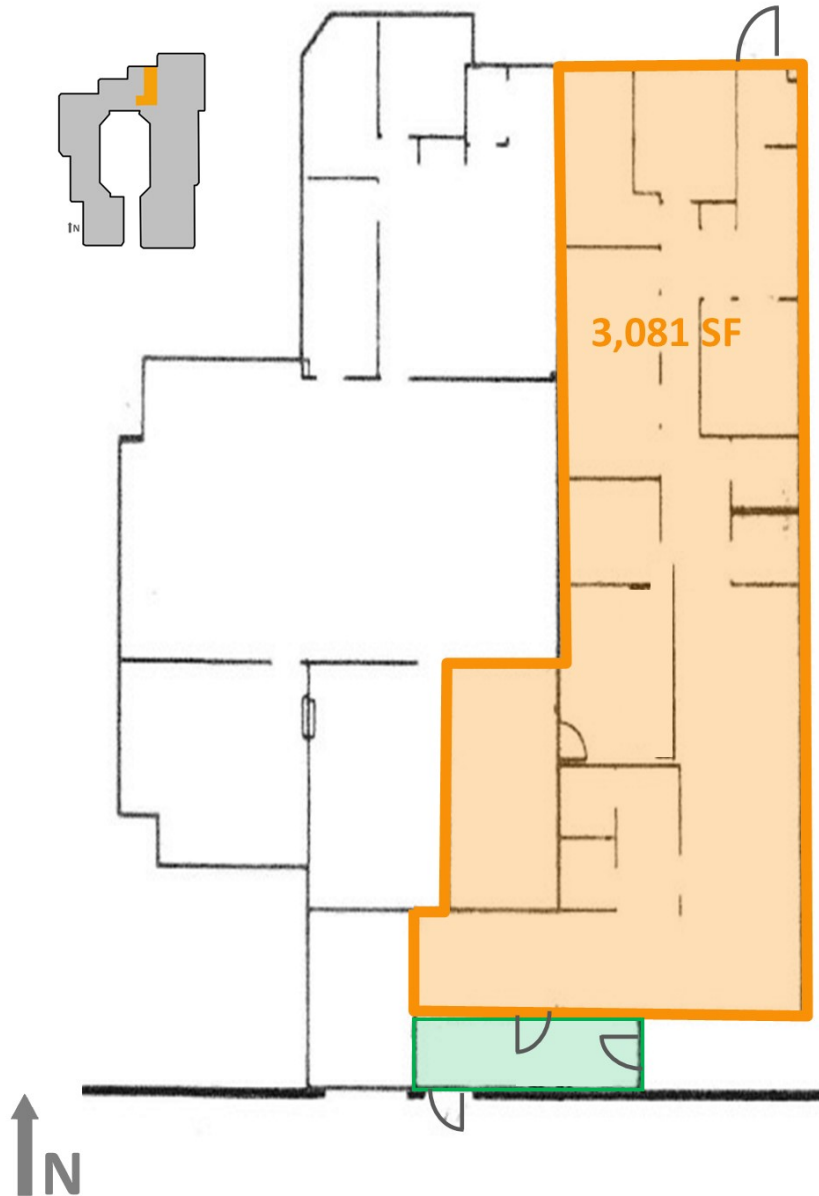


Colleen Geiger, Sales Agent  
262-695-8800  
cgeiger@judsonrealestate.com

Will Schlosser, Sales Agent  
262-695-8800  
wschlosser@judsonrealestate.com

Judson & Associates, S.C.  
2831 N. Grandview Blvd, Suite 222  
Pewaukee, WI 53072

**20900 Swenson Drive, Suite 570**

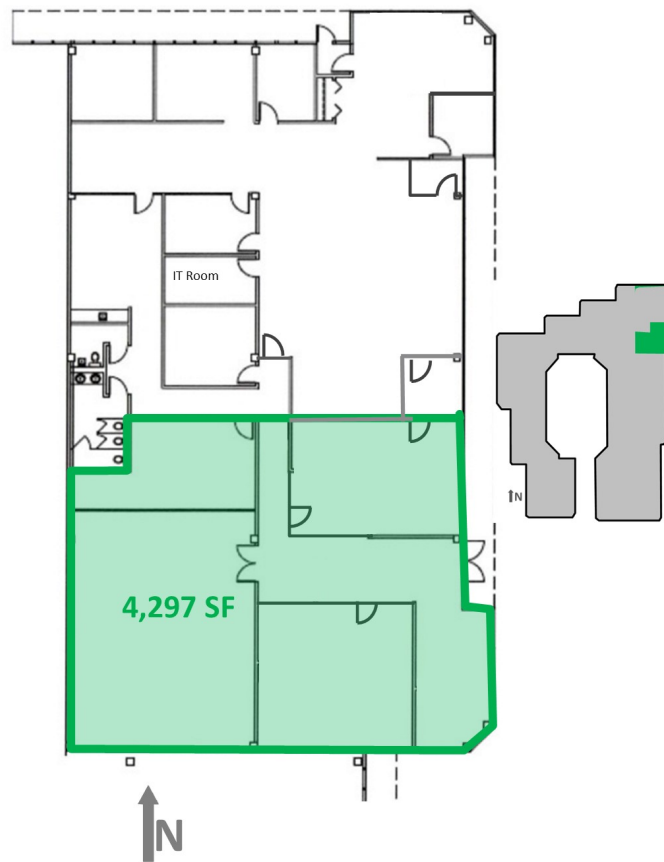


**Colleen Geiger, Sales Agent**  
262-695-8800  
cgeiger@judsonrealestate.com

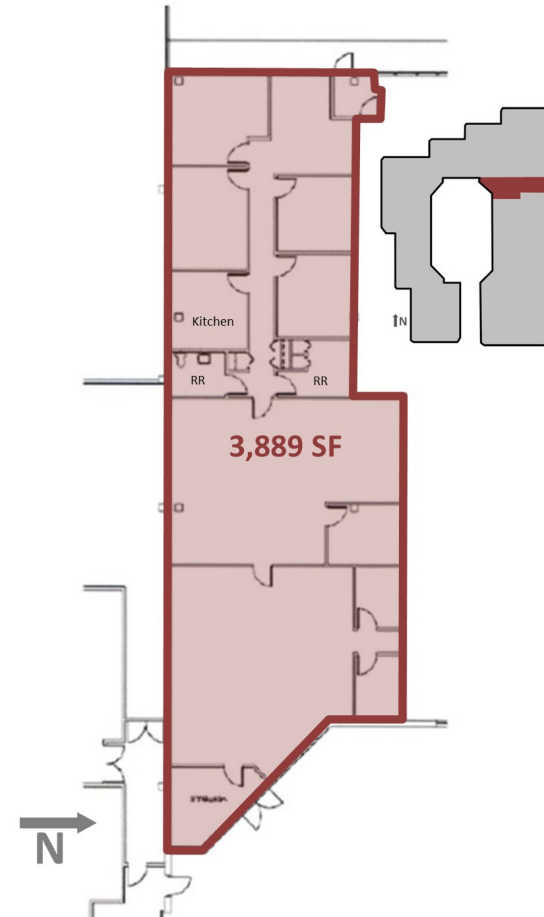
**Will Schlosser, Sales Agent**  
262-695-8800  
wschlosser@judsonrealestate.com

Judson & Associates, S.C.  
2831 N. Grandview Blvd, Suite 222  
Pewaukee, WI 53072

**20900 Swenson Drive, Suite 655**



**20900 Swenson Drive, Suite 700**

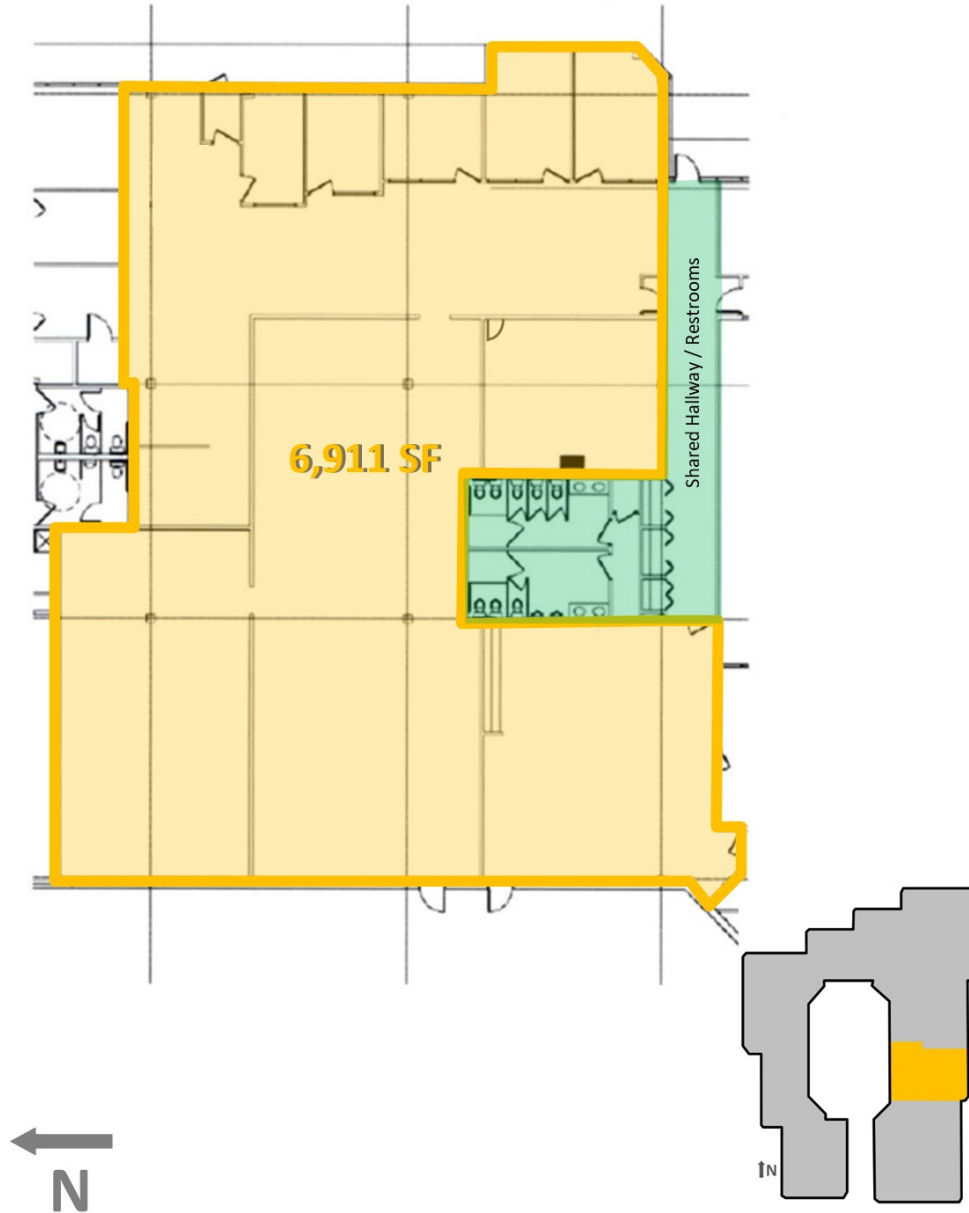


**Colleen Geiger, Sales Agent**  
262-695-8800  
cgeiger@judsonrealestate.com

**Will Schlosser, Sales Agent**  
262-695-8800  
wschlosser@judsonrealestate.com

Judson & Associates, S.C.  
2831 N. Grandview Blvd, Suite 222  
Pewaukee, WI 53072

**20900 Swenson Drive, Suite 850**



**Colleen Geiger, Sales Agent**  
262-695-8800  
cgeiger@judsonrealestate.com

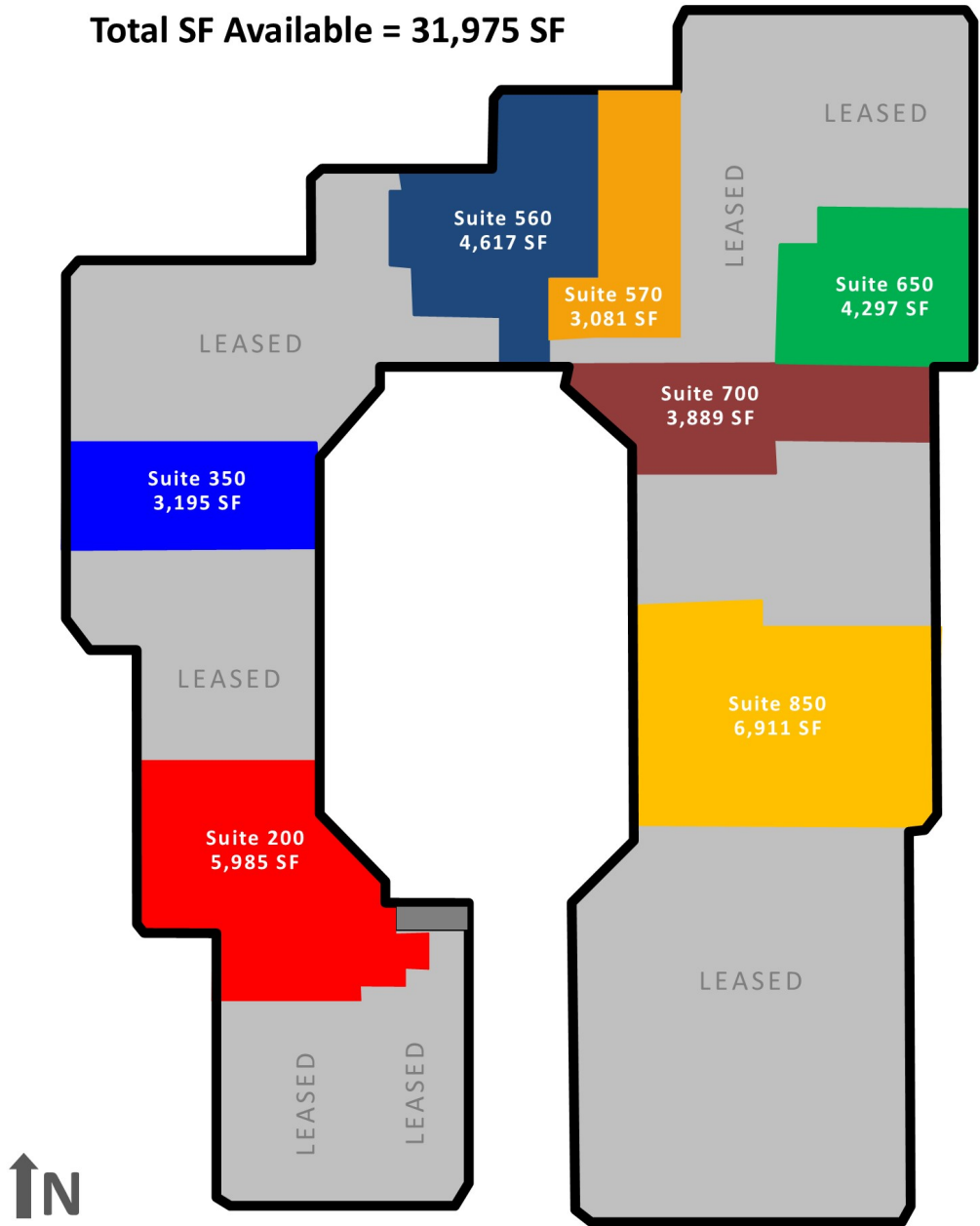
**Will Schlosser, Sales Agent**  
262-695-8800  
wschlosser@judsonrealestate.com

Judson & Associates, S.C.  
2831 N. Grandview Blvd, Suite 222  
Pewaukee, WI 53072



# 20900 Swenson Drive, Brookfield

Total SF Available = 31,975 SF



Colleen Geiger, Sales Agent  
262-695-8800  
cgeiger@judsonrealestate.com

Will Schlosser, Sales Agent  
262-695-8800  
wschlosser@judsonrealestate.com

Judson & Associates, S.C.  
2831 N. Grandview Blvd, Suite 222  
Pewaukee, WI 53072

## 20900 Swenson Drive, Brookfield



Colleen Geiger, Sales Agent  
262-695-8800  
cgeiger@judsonrealestate.com

Will Schlosser, Sales Agent  
262-695-8800  
wschlosser@judsonrealestate.com

Judson & Associates, S.C.  
2831 N. Grandview Blvd, Suite 222  
Pewaukee, WI 53072

1 Prior to negotiating on your behalf the Broker must provide you the following disclosure statement:

2 **BROKER DISCLOSURE TO CUSTOMERS**

3 You are a customer of the broker. The broker is either an agent of another party in the transaction or a subagent of another broker  
4 who is the agent of another party in the transaction. The broker, or salesperson acting on behalf of the broker, may provide  
5 brokerage services to you. Whenever the broker is providing brokerage services to you, the broker owes you, the customer, the  
6 following duties:

7 ■ The duty to provide brokerage services to you fairly and honestly.

8 ■ The duty to exercise reasonable skill and care in providing brokerage services to you.

9 ■ The duty to provide you with accurate information about market conditions within a reasonable time if you request it, unless  
10 disclosure of the information is prohibited by law.

11 ■ The duty to disclose to you in writing certain material adverse facts about a property, unless disclosure of the information is  
12 prohibited by law (See Lines 47-55).

13 ■ The duty to protect your confidentiality. Unless the law requires it, the broker will not disclose your confidential information or the  
14 confidential information of other parties (See Lines 22-39).

15 ■ The duty to safeguard trust funds and other property the broker holds.

16 ■ The duty, when negotiating, to present contract proposals in an objective and unbiased manner and disclose the advantages and  
17 disadvantages of the proposals.

18 Please review this information carefully. A broker or salesperson can answer your questions about brokerage services, but if you  
19 need legal advice, tax advice, or a professional home inspection, contact an attorney, tax advisor, or home inspector.

20 This disclosure is required by section 452.135 of the Wisconsin statutes and is for information only. It is a plain-language summary of  
21 a broker's duties to a customer under section 452.133 (1) of the Wisconsin statutes.

22 **CONFIDENTIALITY NOTICE TO CUSTOMERS**

23 **BROKER WILL KEEP CONFIDENTIAL ANY INFORMATION GIVEN TO BROKER IN CONFIDENCE, OR ANY INFORMATION**  
24 **OBTAINED BY BROKER THAT HE OR SHE KNOWS A REASONABLE PERSON WOULD WANT TO BE KEPT CONFIDENTIAL,**  
25 **UNLESS THE INFORMATION MUST BE DISCLOSED BY LAW OR YOU AUTHORIZE THE BROKER TO DISCLOSE PARTICULAR**  
26 **INFORMATION. A BROKER SHALL CONTINUE TO KEEP THE INFORMATION CONFIDENTIAL AFTER BROKER IS NO LONGER**  
27 **PROVIDING BROKERAGE SERVICES TO YOU.**

28 **THE FOLLOWING INFORMATION IS REQUIRED TO BE DISCLOSED BY LAW:**

29 1. **MATERIAL ADVERSE FACTS, AS DEFINED IN SECTION 452.01 (5g) OF THE WISCONSIN STATUTES (SEE LINES 47-55),**

30 2. **ANY FACTS KNOWN BY THE BROKER THAT CONTRADICT ANY INFORMATION INCLUDED IN A WRITTEN INSPECTION**  
31 **REPORT ON THE PROPERTY OR REAL ESTATE THAT IS THE SUBJECT OF THE TRANSACTION.**

32 **TO ENSURE THAT THE BROKER IS AWARE OF WHAT SPECIFIC INFORMATION YOU CONSIDER CONFIDENTIAL, YOU MAY LIST**  
33 **THAT INFORMATION BELOW (SEE LINES 35-36). AT A LATER TIME, YOU MAY ALSO PROVIDE THE BROKER WITH OTHER**  
34 **INFORMATION YOU CONSIDER TO BE CONFIDENTIAL.**

35 **CONFIDENTIAL INFORMATION:**

36

37 **NONCONFIDENTIAL INFORMATION (The following information may be disclosed by Broker):**

38

39 **(INSERT INFORMATION YOU AUTHORIZE THE BROKER TO DISCLOSE SUCH AS FINANCIAL QUALIFICATION INFORMATION.)**

40 **CONSENT TO TELEPHONE SOLICITATION**

41 **I/We agree that the Broker and any affiliated settlement service providers (for example, a mortgage company or title company) may**  
42 **call our/my home or cell phone numbers regarding issues, goods and services related to the real estate transaction until I/We**  
43 **withdraw this consent in writing. List Home/Cell Numbers:**

44 **SEX OFFENDER REGISTRY**

45 **Notice: You may obtain information about the sex offender registry and persons registered with the registry by contacting the**  
46 **Wisconsin Department of Corrections on the Internet at: <http://offender.doc.state.wi.us/public/> or by phone at 877-234-0085.**

47 **DEFINITION OF MATERIAL ADVERSE FACTS**

48 **a "material adverse fact" is defined in Wis. Stat. § 452.01 (5g) as an adverse fact that a party indicates is of such significance, or that**  
49 **is generally recognized by a competent licensee as being of such significance to a reasonable party, that it affects or would affect**  
50 **the party's decision to enter into a contract or agreement concerning a transaction or affects or would affect the party's decision**  
51 **about the terms of such a contract or agreement. An "adverse fact" is defined in Wis. Stat. § 452.01 (1e) as a condition or occurrence**  
52 **that a competent licensee generally recognizes will significantly and adversely affect the value of the property, significantly reduce**  
53 **the structural integrity of improvements to real estate, or present a significant health risk to occupants of the property; or information**  
54 **that indicates that a party to a transaction is not able to or does not intend to meet his or her obligations under a contract or**  
55 **agreement made concerning the transaction.**

No representation is made as to the legal validity of any provision or the adequacy  
of any provision in any specific transaction.

Copyright 2006 by Wisconsin REALTORS<sup>®</sup> Association  
Drafted by Attorney Richard J. Staff

Judson & Associates SC  
2831 N Grandview Blvd, Suite 222, Pewaukee WI 53072  
Phone: (262) 695-8800  
Fax: (262) 695-8801